

SAC Administration Tools

SAC is a standalone security and administration control component. Its single point of user administration provides greater control over your users' role permissions across applications, allowing you to benefit from appropriate multi-tier security control, single logon for users, and reduced management and administration overheads.



- Ennovation Ltd
- 3 The Maltings
- Wetmore Road
- Burton on Trent
- Staffs
- DE14 1SE

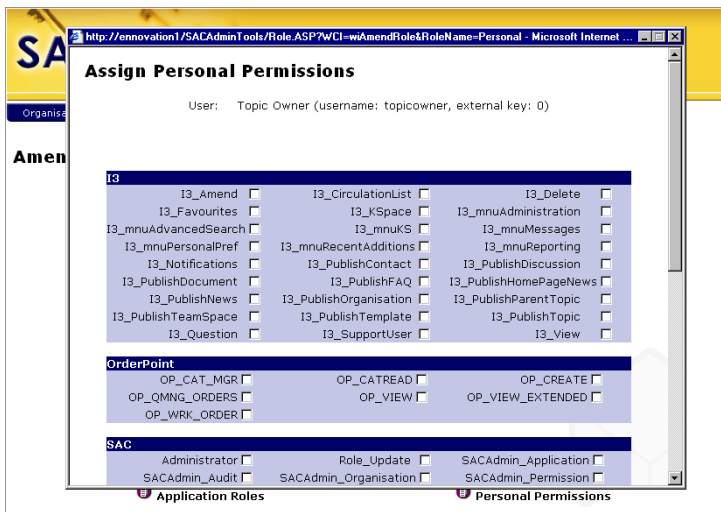
- Tel: +44 (0) 1283 569769
- Fax: +44 (0) 1283 569765

- info@ennovation.co.uk
- www.ennovation.co.uk

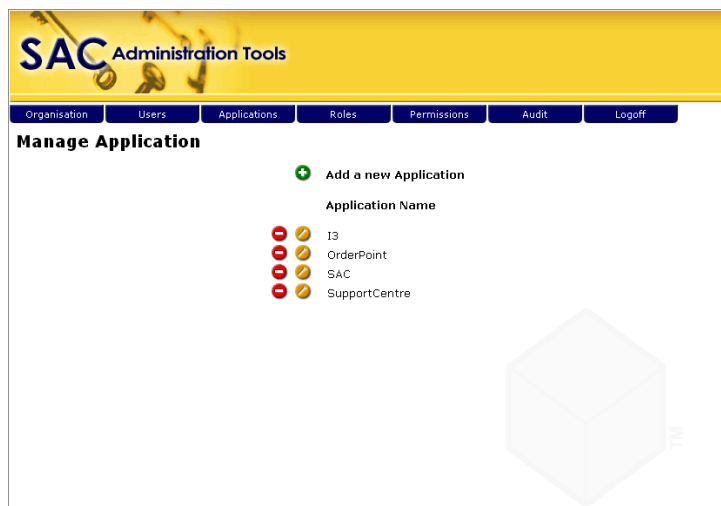
SAC Product Features

Control across applications

SAC is a standalone Security and Administration Control component offering application permission support across a number of applications, with permissions allocated to users via roles. The author of the application can select the exact level of permissions available to each of their users, ensuring that your organisation retains full control over the access and rights given to your employees.



Support libraries offering easy-to-use developer level access to this functionality are also available to allow other applications able to call COM components to integrate with these services. The ability to control permissions across any number of applications via SAC will allow your company to benefit from the reduced cost of developing access control for each application, and the administrative overhead of managing user details in multiple applications.



- Ennovation Ltd
- 3 The Maltings
- Wetmore Road
- Burton on Trent
- Staffs
- DE14 1SE

- Tel: +44 (0) 1283 569769
- Fax: +44 (0) 1283 569765

- info@innovation.co.uk
- www.innovation.co.uk

SAC AdminTools offers a single toolset for accepting and managing the relationship communities and their access to other relationship services and applications.

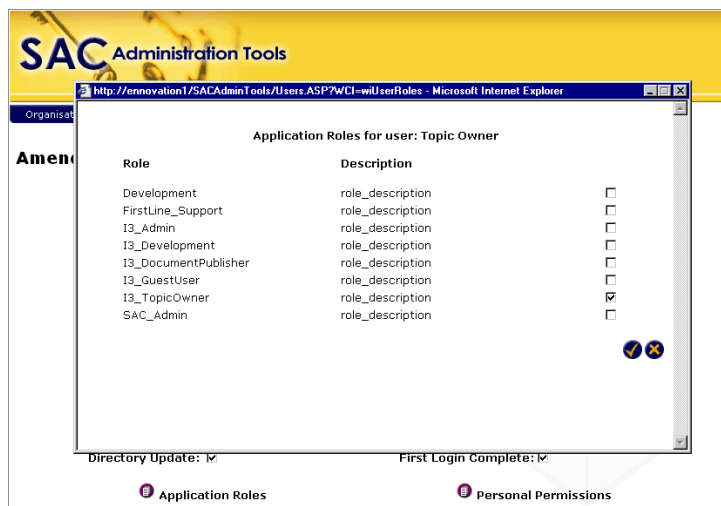
Levels of security control

SAC supports the use of a dedicated logon server (running over SSL if required) and mechanisms for applications to share a common “logon”. The SAC layer provides a very sophisticated model allowing the application author to choose a level of control suitable for their application from simple “is this a valid logged on user” for less sensitive applications to full permission with attributes against account level for more sensitive applications. The system uses GUID keys for maximum scalability.

The Single Sign On capability ensures that users of the Intranet are asked to provide a single set of credentials to access any of the applications. Each application then checks that the user has the authority permission before providing functionality and then performing the requested operations. This ensures that even if your network boundary security is breached, the applications still thoroughly verify the user.

Multiple user roles

Applications have configurable permission sets, which can be allocated to administrator-defined roles, which are then assigned to individual users. Users can be assigned one or many roles and resulting permissions are additive. The permissions system also contains multi-level permission attributes for use in applications requiring that level of sophistication. This acknowledges the fact that one particular employee may need more control over certain projects or products held in a system. For example, a procurement application might hold different authorisation limit values for different types of goods against the authorisation permission.

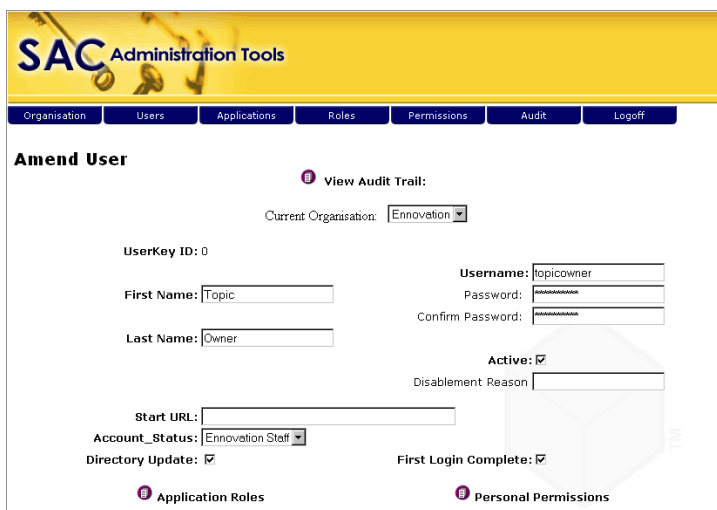



- Ennovation Ltd
- 3 The Maltings
- Wetmore Road
- Burton on Trent
- Staffs
- DE14 1SE
- Tel: +44 (0) 1283 569769
- Fax: +44 (0) 1283 569765
- info@ennovation.co.uk
- www.ennovation.co.uk

Management of accounts

SAC provides users with the facilities to manage their own account information and passwords, and the administration tools allow configurable centralised administration and control of all user accounts. These tools also support multiple, configurable layers of administrative users using the same permission mechanisms as the end user applications.

The User Administration application is managed and operated by the highest level of administrator. These individuals have full access to start and cease individual access, and to change authority levels and permissions.

The screenshot shows the 'Amend User' page in the SAC Administration Tools. At the top, there is a yellow header with the 'SAC Administration Tools' logo and a navigation bar with tabs for Organisation, Users, Applications, Roles, Permissions, Audit, and Logoff. The main content area is titled 'Amend User' and includes a 'View Audit Trail' link. Below this, there is a 'Current Organisation' dropdown menu set to 'Ennovation'. The form contains several input fields: 'UserKey ID: 0', 'First Name: Topic', 'Last Name: Owner', 'Username: jopicowner', 'Password' (masked with asterisks), and 'Confirm Password' (masked with asterisks). There are also checkboxes for 'Active' (checked), 'Directory Update' (checked), and 'First Login Complete' (checked). A 'Disablement Reason' field is present but empty. At the bottom, there are two links: 'Application Roles' and 'Personal Permissions'.

Password control

The system provides a sophisticated password control environment suitable for most commercial environments with “out of the box” support for password ageing, re-use prevention, mandatory change and password character content enforcement; all of which can be disabled if required. The system automatically generates new passwords for users accounts when passwords are incorrectly entered three times consecutively and emails new account details to the legitimate user’s email account. SAC also supports user challenge for re-authentication for applications needing protection for particularly sensitive functionality.

The Single Sign On service supports separate logon servers for scalability and can also be configured to run over secure sockets to ensure encryption of username password combinations, even where the user applications run over standard none encrypted network service. A semi-automated upload file may be used to set up and update details of your Intranet users.

- Ennovation Ltd
- 3 The Maltings
- Wetmore Road
- Burton on Trent
- Staffs
- DE14 1SE

- Tel: +44 (0) 1283 569769
- Fax: +44 (0) 1283 569765

- info@ennovation.co.uk
- www.ennovation.co.uk

Audit trail and search facility

The User Administration application stores an audit trail of the events and actions undertaken by all users. This allows greater management control, as all actions taken on SAC can be viewed. A search facility is also available for administrators to quickly and efficiently search through the audit trail and the user listings.



SAC Administration Tools						
Organisation	Users	Applications	Roles	Permissions	Audit	Logoff
View Audit Trail						
Action	Application	Time/Date	Context	Description		
User_Login	SAC	16/01/2003 12:51:19		User Login Succeeded		
User_Login	SAC	16/01/2003 12:50:41		User Login Succeeded		
User_Login	SAC	15/01/2003 14:01:07		User Login Succeeded		
User_Login	SAC	15/01/2003 13:31:42		User Login Succeeded		
User_Login	SAC	15/01/2003 11:54:19		User Login Succeeded		
User_Login	SAC	13/01/2003 14:04:16		User Login Succeeded		
User_Login	SAC	13/01/2003 10:19:54		User Login Succeeded		
User_Login	SAC	13/01/2003 10:18:30		User Login Succeeded		
User_Login	SAC	13/01/2003 09:54:24		User Login Succeeded		
User_Login	SAC	13/01/2003 08:49:27		User Login Succeeded		
User_Login	SAC	13/01/2003 08:40:22		User Login Succeeded		
User_Login	SAC	13/01/2003 08:21:15		User Login Succeeded		

- Ennovation Ltd
- 3 The Maltings
- Wetmore Road
- Burton on Trent
- Staffs
- DE14 1SE

- Tel: +44 (0) 1283 569769
- Fax: +44 (0) 1283 569765

- info@ennovation.co.uk
- www.ennovation.co.uk